

Homes Caring for Autism Ltd

quality services for autistic individuals



Brochure



- Specialising in complex and challenging autistic behaviour - yet still integrating the person into the community
- Excellent record of staff retention and development
- New homes:

Starbrook (Wiltshire) opened January 2011	Durlston Gardens (Wiltshire) Opens Summer 2012
<ul style="list-style-type: none"> • 5 rooms in family style home (all en-suite) • Kitchen/Lounge/Conservatory • 1 independent bedsit, with its own private conservatory <p>Set in a secluded, private location with 2 acres of land</p>	<ul style="list-style-type: none"> • 6 rooms in family style home (4 en-suite and 2 with a shared bathroom) • Kitchen/Lounge/Conservatory • Large garden

- Residential and autism-specific domiciliary care/supported living
- Consistently in receipt of good CQC inspection reports

In this brochure

- Most recent homes: Wiltshire
- Staff Recruitment & Training
- CQC Inspection Reports
- What we offer
- General Information

Contact us

Up-to-date vacancy information and news is available on our website

www.homes-caring-for-autism.co.uk

✉ For further information, email us at enquiries@homes-caring-for-autism.co.uk

☎ Alternatively, you can telephone us on **01934 429448** (office hours, Mon - Fri)

☎ Our fax number is **01934 613517**

✉ You can, of course, write to us at:

**Homes Caring for Autism Ltd
Unit 1, Churchill House
Bridgwater Court
Oldmixon Crescent
Weston-super-Mare
North Somerset
BS24 9AY**

www.homes-caring-for-autism.co.uk

NEW HOMES

Starbrook, Trowbridge, Wiltshire

Starbrook opened in January 2011 and marked the beginning of our expansion programme into Wiltshire.

Starbrook has the following facilities:

- 5 rooms in a family style home (all en-suite);
- 1 ground floor large room/bedsit inc private conservatory;
- Large kitchen and lounge, providing more than average communal space;
- breath-taking views overlooking the grounds.



Starbrook is located in the village of Heywood, Wiltshire. It is set within approximately 2 acres and has its own paddock.



Durlston Gardens, Trowbridge, Wiltshire

Durlston Gardens is currently being built to our own specification. It is planned to open for new service users in summer 2012 and will have the following facilities:

- 6 rooms in a family style home (4 en-suite and 2 with a shared bathroom);
- Kitchen, lounge and conservatory;
- Within easy reach, both by bus and country walks, of Trowbridge;

Wiltshire is a ceremonial county in South West England. It is landlocked and is bordered by the counties of Dorset, Somerset, Hampshire, Gloucestershire, Oxfordshire and Berkshire. It contains the unitary authority of Swindon and covers 3,485 km² (861,000 acres). The ancient county town was Wilton, but since 1930 Wiltshire County Council, and its successor Wiltshire Council (from 2009), have been based at Trowbridge.

Wiltshire is characterised by its high downland and wide valleys. Salisbury Plain is famous as the location of the Stonehenge stone circle and other ancient landmarks and as the main training area in the UK of the British Army. The city of Salisbury is notable for its medieval cathedral. Important country houses open to the public include Longleat, near Warminster, and the National Trust's Stourhead, near Mere.

Trowbridge, Wiltshire's county town, lies 2 miles from Starbrook and has plenty of places to eat and drink, as well as a Farmer's Market in the town centre which is held on the fourth Friday of each month.

The town centre is compact, and the focus for shops is the ancient Fore Street; the more modern Shires and Castle Place shopping centres provide a wide variety of outlets. The Civic Hall, a conference and entertainment venue is next to the Town Park, which is also home to the tourist information kiosk.

Staff Recruitment

Staff Recruitment

Our aim is to recruit and retain good staff and encourage continuity of service.

We do this by:

- ✓ Using a two-interview recruitment process
- ✓ Ensuring that we have an Enhanced Criminal Records Bureau check
- ✓ Securing a minimum of two references
- ✓ Providing comprehensive initial and developmental training
- ✓ Encouraging internal promotion and development

The result?

A stable, growing workforce of well trained people with excellent career and personal development opportunities.

Staff Training

Our aim is to provide the best possible service for all those who are in our care.

We do this by:

- ✓ Making the skills and retention of our staff team a major priority. We are deeply committed to an in-depth Induction and ongoing training programme for all staff.
- ✓ Providing initial training which consists of:
 - An Introduction to Autism and the Autistic Spectrum (ASD Level 1)
 - Communication - examining PECS (Picture Exchange Communication System) and other forms of communication
 - Health and Safety
 - Fire
 - Food Hygiene
 - Moving and Handling
 - General
 - Epilepsy: an overview
 - Safeguarding Adults, 'No Secrets' and Awareness of Abuse
 - Policies and Procedures
 - Time spent in the home; this gives new members of staff the opportunity to begin developing their knowledge of the people they will be supporting.
 - Monthly Supervisions for all staff members.

- ✓ Ensuring new staff members shadow experienced staff when they join the teams in the homes, as well as continuing to receive more training on:
 - An introduction to TEACCH
 - Infection Control in the Care Home
 - Medication Administration in the Care Home
 - Positive Behaviour Management - Theory
 - -Practical (3 days)
- ✓ Providing more advanced and ongoing training e.g.
 - Autism and the Autistic Spectrum - Level 2
 - First Aid
 - Person centred planning
 - Person specific TEACCH
 - '3S' training, Signing (Makaton), symbols and speech
 - PECS Development
 - Person specific Epilepsy and other Medication
- ✓ Providing management training which includes:
 - Legalities and Legislation
 - Running a Homes Caring for Autism home
 - Management and Leadership, personal development programme.
 - Blake and mouton Assessment
 - Supervisions and Appraisals

CQC Inspection Reports

Although the Care Quality Commission no longer operate a graded rating system, we are very proud of the last ratings awarded, below, and constantly strive to improve our performance. It is pleasing to note that four different CQC Inspectors conducting inspections in all four homes have given positive reports.

Copies of reports, our views and Action Plans are available upon request from us, both hard copy and electronically. Reports are downloadable from our website:

www.homes-caring-for-autism.co.uk

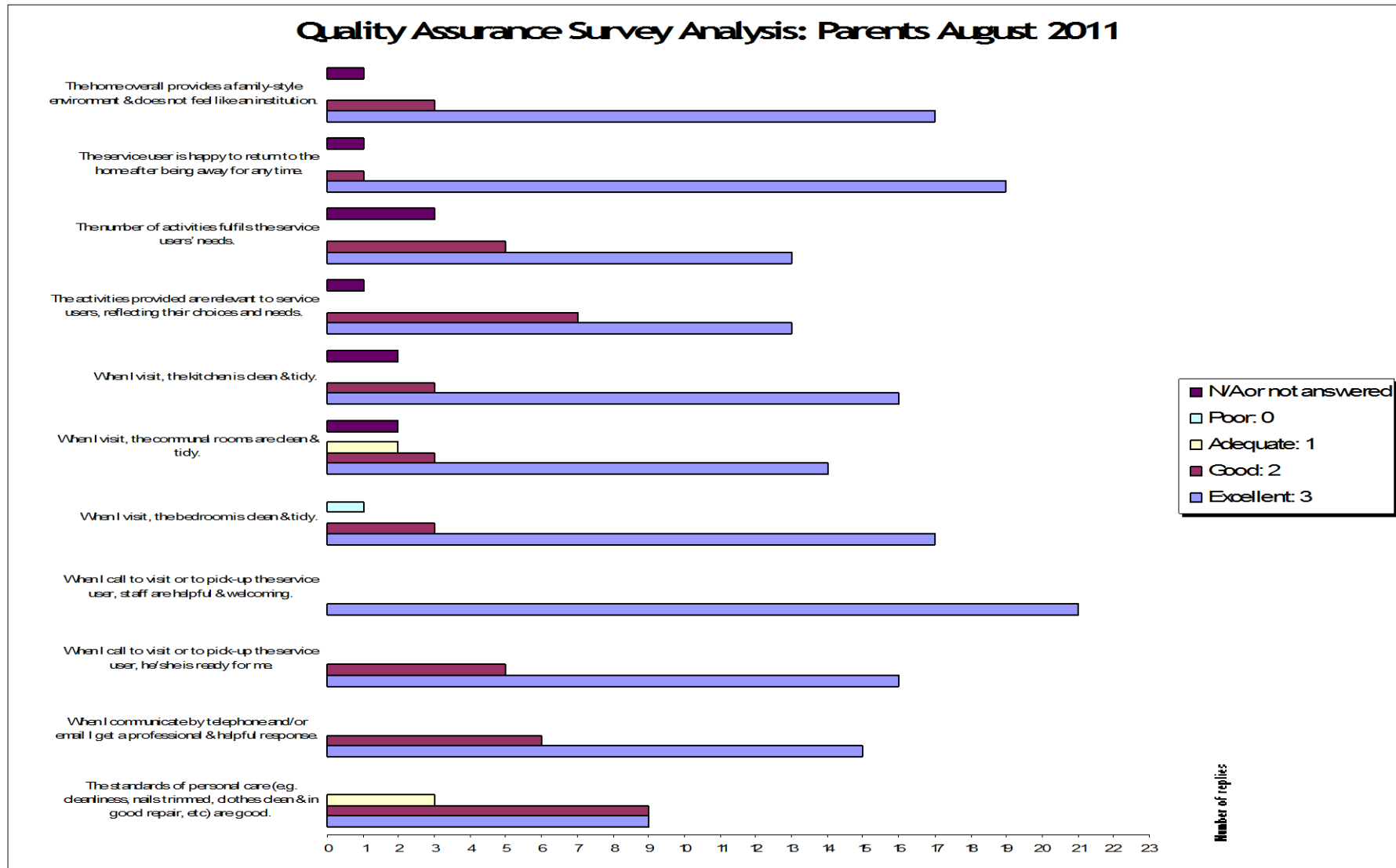
Quality Outcomes Assessed	Apple Tree House Annual Service Review Good Rating 14 Jan 2010	Taunton Random Inspection Reports May 2010	Holly Tree Cottage May 2011	Hilltop August 2011	Stafford Lodge November 2011
Choice of Home	Excellent	To see the above reports please visit the Downloads link on our website.	These homes have been inspected under the CQC's current system of Review of Compliance (see note below). All three homes were deemed to be meeting the assessed Essential Standards of Quality and Safety.	Under the previous rating system, all three homes were rated as Good.	
Individual Needs & Choices	Excellent				
Lifestyle	Good				
Personal & Healthcare Support	Good				
Concerns, Complaints & Protection	Good				
Environment	Good				
Staffing	Good				
Conduct & Management of the Home	Good				

CQC Provider Compliance Assessment

This scheme does not operate a rating system and it is therefore no longer possible for a home to receive a good or excellent rating; homes will either be deemed to be meeting one or more essential standards, or not. If they do not meet any or some of these standards the subsequent report will state what actions are needed and the time frame in which they have to be carried out.

Quality Assurance Survey Analysis: August 2011

Quality Assurance Surveys are carried out on a regular basis and play an important part in our efforts to constantly improve our services to those in our care. The chart below represents the results from the parents' survey, August 2011.



What we offer

We can provide the full spectrum of care, from residential to supported living.

Residential Care Services

Homes Caring for Autism provides caring environments where service users are treated with respect and dignity.



The homes are always refurbished and maintained to a high standard, with a full time Maintenance Manager employed to support the homes and ensure a safe and well maintained environment for all. Activities are organised on a regular basis according to the interests and abilities of individuals and include college courses, work experience, day trips, social events and much more. The

intention is to enjoy a fulfilling life in pleasant surroundings.

The basic ethos is that a person is enabled to develop and grow, emotionally, educationally, socially and spiritually. If a circumstance arose whereby an individual's needs could no longer be met within their particular home, the individual's rights would be paramount and any decisions which needed to be taken as to an alternative home or service would involve the person themselves and/or their advocate. Also included would be other significant people in their life. It is only after all of these views are considered that any decision would be made.



Supported Living/Domiciliary Care Services

For some people the best way for them to lead a happy and fulfilled life is to remain in their own home but they, or their primary carer, might need additional assistance in order for them to achieve this. We are registered with the Care Quality Commission to offer this service and can therefore provide those with autism and other related conditions with the services they require to enable them to live in their own home. If you require a service of this nature please contact us (see page 1 for our contact details) to find out more.

Philosophy

The Directors and Management of the Company feel passionately about the company's philosophy, and we only retain support staff who are also willing to embrace it. We have plenty of parents of our service users who will confirm that we deliver what we promise. We will always accommodate visits and discussions.

Underpinning the philosophy is Homes Caring for Autism's commitment to, and adoption of, the following principles:

Choice

The experience of growing autonomy or self-determination, in not only small everyday matters, but also in major decisions that people make, such as where they live or with whom they live. Personal choice and autonomy defines and expresses the way people live.

Respect

The experience of having a valued place among a network of people and valued roles in community life. It is concerned with challenging the limited negative stereotypes which are built up around people with autism.

Community Participation

The experience of being part of a growing network of personal relationships.

Community Presence

The experience of sharing the ordinary places that define community life. Living in non-segregated settings and participating in a variety of valued activities including leisure and work.

Competence

The experience of a person gaining more skills and ability to perform functional and meaningful activities with whatever assistance is required.

General Information

Registration

Our services are registered by the Care Quality Commission under the Health & Social Care Act 2008. To obtain such registration, we must comply with the regulations set out in the Health & Social Care Act 2008 (Regulated Activities) Regulations 2010 and the Care Quality Commission (Registration) Regulations 2009.

It is also necessary to meet strict criteria regarding:

- Fire Regulations
- Health and Safety Regulations
- Building Regulations

Preliminary Arrangements

When a person is considering moving to a Homes Caring for Autism residential home, they would initially be invited to visit the house. Each individual will have a planned introduction to their new home according to their needs and circumstances. We pride ourselves in our pre-admission work, and have been complimented on this within our CQC Inspection Reports.

As far as possible, each individual will be offered the opportunity to choose the internal décor and furnishings of the house. Every service user has the opportunity to select décor and carpet for their bedroom, once any trial period has elapsed.

Individual Service User Plans

These are undertaken on a planned basis according to the needs of the individual, so a flexible approach to this is essential.

The aim of these plans is to focus on each individual's specific strengths and needs. Once this has been achieved, a programme setting educational, social, spiritual and emotional needs can be set. This allows for a truly holistic approach to a person's development to take place.

Reviews are also undertaken on a regular

basis, these include the individuals themselves and/or their advocate, parents, district carers and other significant people. Typically the first review will be held after three months and every six months thereafter, or as otherwise agreed with all concerned.

The aim of the review is to look at the quality of the service being offered to the individual.

Person Centred Plans

The company has always followed person centred approaches and every care plan and support plan has the individual at its heart.

Our person centred plans, for all the people in our care, continue to develop as we conduct a person centred review for each individual.

For our staff, a major focus is on developing person centred plans, meetings, supervisions and appraisals.

Personal Details

Personal details which are held regarding an individual residing in a house are considered highly confidential and as such are covered by specific procedures.

Valuables

Secure facilities will be provided for each individual to keep money and objects of value safely in their room. This is in keeping with principles of independence, autonomy and choice. However, it is acknowledged that this involves an element of risk.

Within each house, secure facilities will be provided for money and valuables which are owned or in the possession of an individual residing there, who may not be able to retain such articles safely within their own room. A register of such items will be maintained at the house by the Registered Manager and appropriate receipts will be issued accordingly.

Insurance

Homes Caring for Autism have a comprehensive Public Liability Insurance Policy with a nationally renowned company specialising in this field. This includes a substantial element governing competence/negligence. In addition, specific arrangements have been made to protect each individual's personal effects/valuables up to a value of £2,500.

Funding

The placements made are individual and, as such, the funding agreements are based upon that premise. The basis for funding is geared to the level of individual services provided. The contribution from the service user for his/her residential care is based upon the benefits available from income support, transitional grant and other related benefits. Any personal element is given to the service user.

Complaints Procedure

A formal complaints procedure exists which is accessible to all service users, as well as to their carers, parents or other representatives. Should the need for a complaint arise, this should be referred initially to the Manager and thereafter the company's procedure is to be adhered to.

Should a parent, relative, friend or advocate wish to complain further, they have the right to consult with and/or complain to the Care Quality Commission.

If further action is required by a representative, any concerned person can utilise the Ombudsman. The name and address of this officer can be obtained from the Commission.

Video Testimonials by Parents

The following are extracts from the above, which can be viewed on our website:

"N's confidence is being built all the time and the staff are always very helpful.

"We are very happy with A's situation. The provision of the care, the standard of staff and the opportunities provided to the users are second to none."

"I am very impressed with the quality of care H receives. She is really blossoming".

Visit our website

www.homes-caring-for-autism.co.uk

for more information.